



HEART OF
OREGON
CORPS

CENTRALIZED CAMPUS CAMPAIGN



PROJECT SCOPE

Heart of Oregon Corps' centralized campus includes:

- A 6,600 SF new campus center, with trauma-informed design and a strong youth centered culture
- Relocated modular buildings for additional capacity
- Adjacent 14,000 SF warehouse building and 10,000 SF covered equipment bays to support HOC's logistical and training needs
- A 3.4-acre campus with a central courtyard with outdoor amenities, and sufficient ingress/egress and parking
- Central Redmond location with nonprofit partner Opportunity Foundation
- Construction to begin in September 2025



HEARTOFOREGON.ORG



WHY OUR YOUTH NEED A CAMPUS

Campus may be an everyday word for young adults on the college track. On the workforce path, however, it is rare. We aim to normalize and support youth choosing an employment and certifications path, and provide them with the same level of community support as their peers attending a traditional college experience.

HOC youth and young adults have expressed a need for:

- Social Services
- Recreational Space
- Laundry Facilities
- Kitchen & Cafeteria Space
- Personal Care + Break Spaces

The new campus is a key component of HOC's Strategic Plan addressing capacity. Other strategic priorities for the organization include engagement, equity, and relevancy.

STRONGER TOGETHER

Constructing a centralized campus will result in efficiencies in travel, equipment usage, and staffing; enable HOC to enhance current services through youth job skills training, educational activities and youth leadership; and expand services by partnering with other groups to offer trainings/classes, further meeting the needs and reducing barriers to success of the young adults in Central Oregon.



EXPANDED TRAININGS + SERVICES

Internal Trainings and Services Include:

- Early Education and Childcare
- Natural Resources Certifications
- Trades Certifications
- Driver's Education Prep
- Career Center

New Partner Trainings and Services May Include:

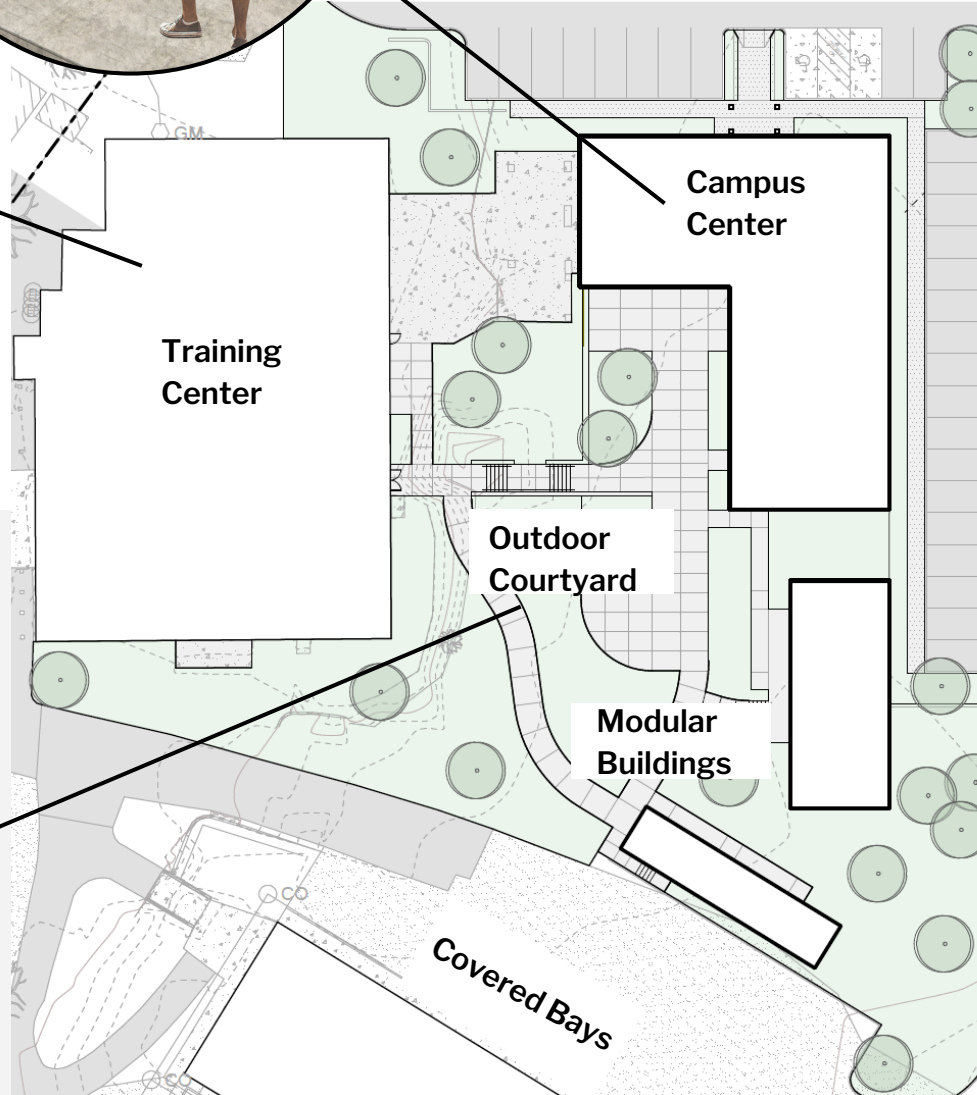
- Driver's Education
- Mental Health , Counseling, Pet & Art Therapy
- Referrals for Housing
- Access to Public Benefits





CENTRALIZED CAMPUS- YOUTH CENTERED DESIGN

HEART OF
OREGON
CORPS



Courtyard/Site- new construction

3.44 acres

Key Purpose: outdoor courtyard connecting buildings with pedestrian accessible pathways creating a true communal campus feel. A place where people connect, circulate, and reflect that meets trauma-informed care needs.

Training Center – existing building

14,000SF

Key Purpose: expansive industry-certification training space for construction trades and natural resources. Roll up doors allow inside loading for HOC vehicles and trailers. Hands-on classrooms expand capacity of new building.

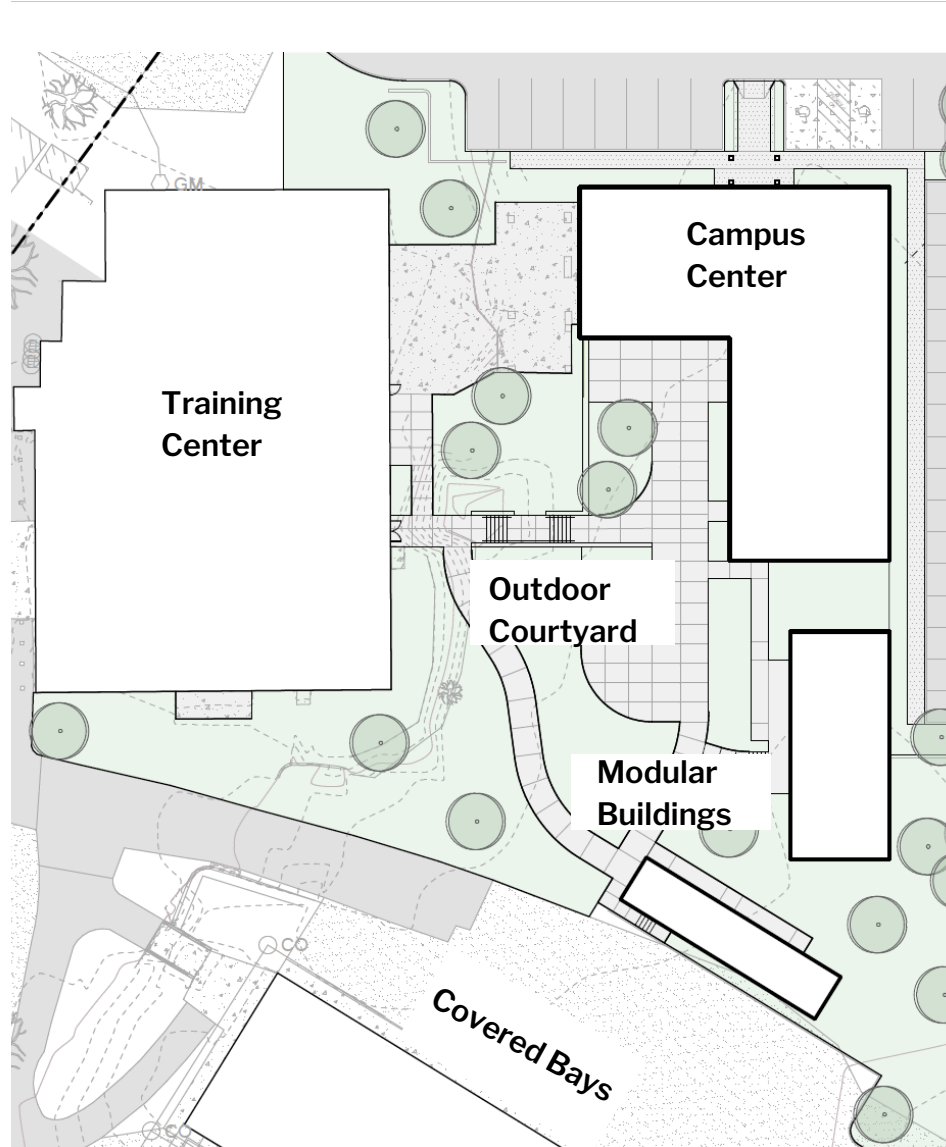
Covered Bays – existing building

10,000SF

Key Purpose: industrial covered space for fleet and trailer parking, secure equipment and tool storage, and hands-on training space.

Modular Buildings – existing buildings

Key Purpose: additional capacity for staff offices and classroom space.

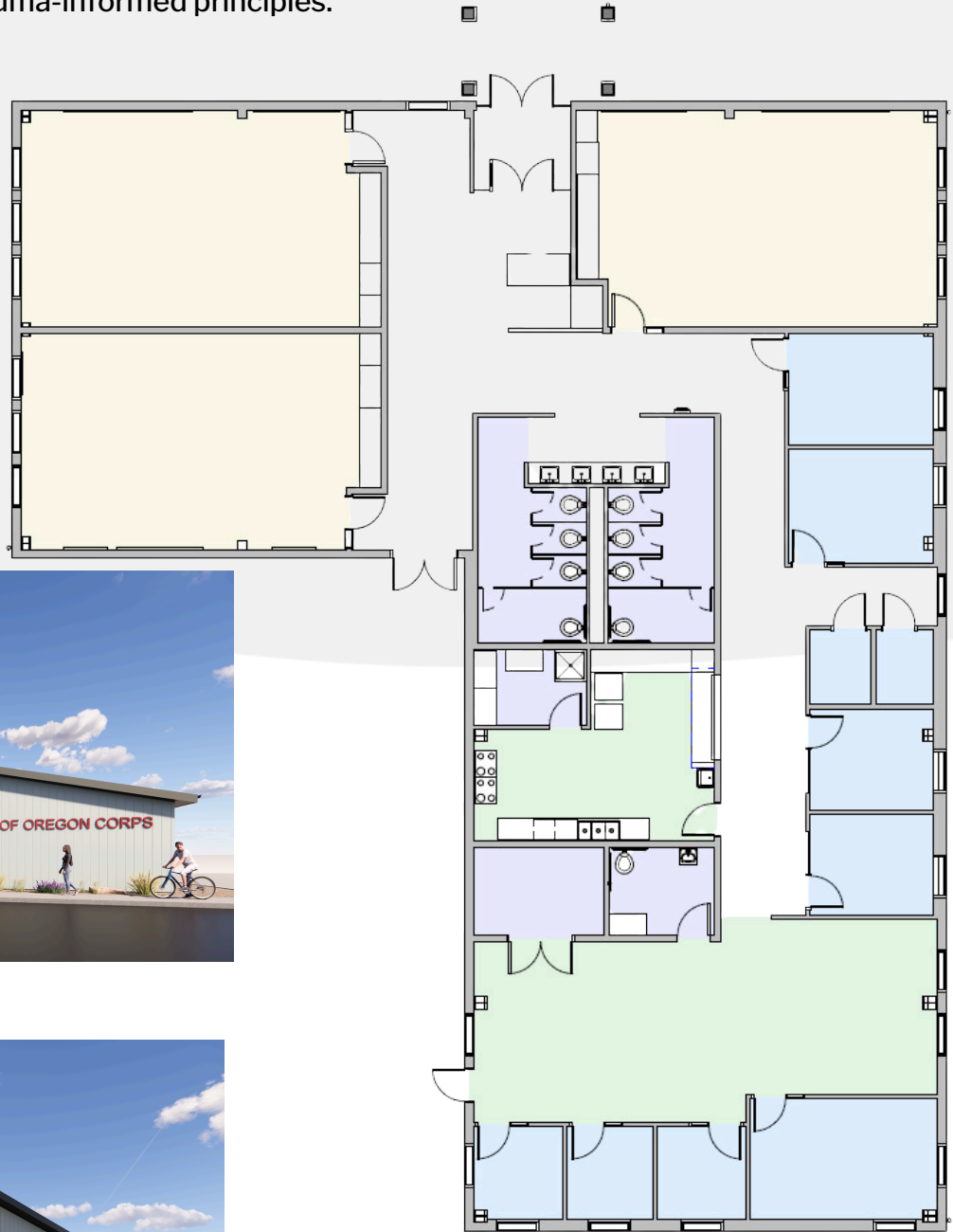


Campus Center- new construction

6,600 SF

Key Purpose: a flagship campus center for youth and young adults on a workforce path designed with trauma-informed principles.

- Secure and welcoming entry
- Gathering spaces
- Space for alumni & career supports
- Classrooms and meeting spaces
- Kitchen for youth meals and staff breakroom
- Restrooms for corpsmembers
- Staff offices and open collaborative workspaces



Front Entrance



Outdoor Courtyard





CENTRALIZED CAMPUS- YOUTH CENTERED DESIGN

HEART OF
OREGON
CORPS



Project Consultants:

BBT ARCHITECTS

REDPOINT

R&H
CONSTRUCTION

Project Supporters:

Maybelle Clark Macdonald Fund Roundhouse Foundation MJ Murdock Charitable Trust
Marie Lamfrom Foundation Collins Foundation Hayden Homes
PGE Foundation Clark Family Foundation Crevier Family Foundation
Bend Foundation First Interstate Bank Foundation Healy Foundation
Autzen Foundation State of Oregon Deschutes County

HEARTOFOREGON.ORG

